



The Gallery of Art in Giving

Every art purchase funds innovative childhood cancer research

Fall 2017- In this issue:

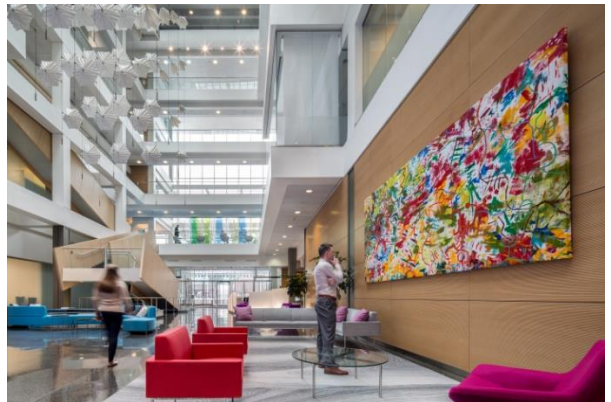
- Alexandria RE Equities, Inc. - 360 Longwood Ave.
- BioMed Realty - 650 East Kendall Square
- Featured New Art in Giving Artists
- Immunotherapy Research Update
- 100/200 Technology Square
- New art showcased at Flour Café
- “Fun” Raising event at Glass House



Glass House Dining Room - the venue for October 12 fundraiser (see page 4 for details)

Biomed Realty:

650 East Kendall Square, Cambridge, MA



Alexandria Real Estate Equities, Inc.

360 Longwood Avenue, Boston, MA



New art in lobby of 360 Longwood Avenue.

“Himmelfarb’s painting was the perfect addition to an already exceptionally-designed lobby in one of Kendall Square’s premier buildings. The donation to pediatric cancer research makes the addition all the more satisfying. Art in Giving really has found a unique way to provide great art while serving an even greater cause.”

- Chris Jessop

Project Manager, Biomed Realty

Featured Artists

Eunju Kang

Artist Quote: “My art has a journal-like quality. Branches, sticks, leaves, dust and sound of wind and ocean helped me to create this series of flowers.”

Born in Korea, Eunju Kang has a fresh, multi-cultural sensibility, which is beautifully expressed in her work. Inspired by the details of nature, she has overlaid evocative shapes and colors to create a dramatic burst of color that reflects the new life and blossoming of spring.



Jason Sawtelle



Artist quote: “As a native of upstate New York with a passion for the outdoors, my work is inspired by the power and drama in the subtleties of nature. Rather than focus on grand vistas, my paintings explore the lyrical qualities of light, shape and color as seen from a different perspective. I love to celebrate the details and create contemporary compositions that reflect my connection with my subject as much as they depict the scene.”



Stephanie Warburg

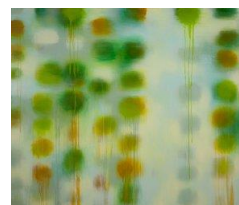
Artist Quote: "Radiant colors illuminate the mystical regions of our real and imagined space. Forms explore the possibilities beyond our ordinary perceptions of the world with unusual insights and concepts. To dream and to fantasize define my universe."



Carol Lefkowitz



Artist Quote: “I have been doggedly sunk in the muck of paint. Obsessively caught in the metaphorical net of hauling pattern, transparency and depth, I seem to also pull up randomness, opacity and flatness to join in each painting’s evolution. This series began as fish in water and over time has evolved into an imageless space. Still viscous, the work is flat, on the surface, as well as deep and without limit.”





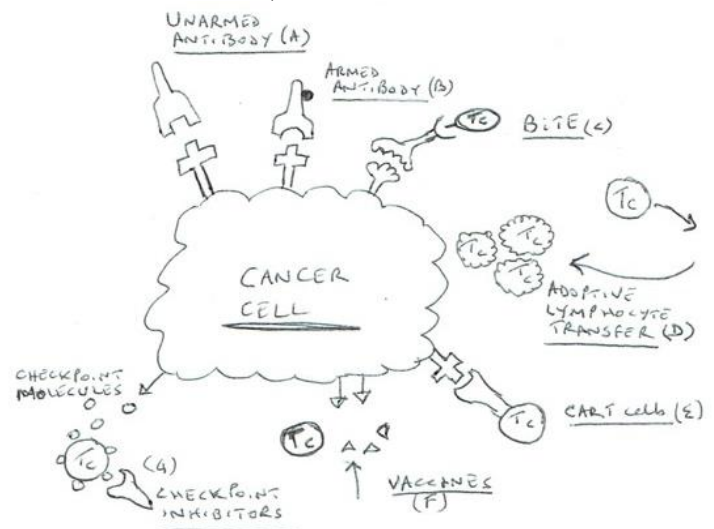
In our last [newsletter](#), I had provided an overview on the basic principles of immunotherapy and introduced the idea of immunoediting. Immunotherapies are being developed using various strategies based on our understanding of these processes. These strategies include (see accompanying hand drawing):

1. Multiple strategies have used antibodies that are directed against these tumor specific proteins that could either directly kill the cancer cells (a) or deliver a toxin or radioactive product that could directly kill the cancer cells (b), or use these antibodies to the cancer cells to attract the cancer cell killing T-cells (BiTE technology) (c).
2. Multiple strategies have focused on T-cell activation, with the most "simple" being direct enlistment of patient's own T cells which are harvested and then in the laboratory these cells are trained, expanded and activated against tumor, and transferred back to patients either alone or in conjunction with other immune cells (adoptive lymphocyte transfer) (d). One exciting variation of this solution has been the genetic modification of these T cells to express a chimeric antigen receptor (CAR). These CARs are a fusion of segments of antibody as well as some critical signaling modules that activate these T cells when they recognize the tumor cells. These CARs are placed into the T cells by using viruses or by electroporation. These CAR-T therapies are generating a lot of excitement (e). Variations of these CAR-T cells now include strategies to use T cells that do not need to be taken from the patient themselves (auto) but are from other donors but can be used across different patients (allo).
3. Much of the immunotherapy strategies have been vaccine based. Tumor vaccines encompass whole tumor antigens to specific tumor antigens and using just the injection of these antigens directly into the patient or tumor or using specific cells, such as dendritic cells or viruses to present the antigen to the immune system.

The idea would be to activate the immune system which would then recognize cancer cells with the same antigens and directly kill them (f).

4. Some of the most successful strategies have been to develop drugs that can inhibit the immune checkpoints and these immune checkpoint inhibitors are now approved for the treatment of many tumors and are clearly changing the landscape of cancer treatment (g).

Successful use of these strategies against brain tumors requires us to understand some specific issues that are germane to brain tumors. In the last newsletter we had mentioned grants we had provided in previous years to researchers exploring immunotherapeutic strategies in the treatment of brain cancer. In May we funded another outstanding nationally renowned researcher exploring new immunotherapeutic avenues for the treatment of brain tumors. Prof. Hideho [Okada](#), Professor of Neurosurgery at the University of California, San Francisco. In his research that the Foundation has funded, Prof. Okada will create an aggregation of all the important immunocompetent cells in aggregates in the brain and this will allow the full power of the immune system to be unleashed on the brain tumor. This may also aid other therapies directed towards the tumor, such as vaccines.



100/200 Technology Square

Cambridge, MA



Bold art stands out against neutral lobby walls.

Flour Bakery + Café

40 Erie Street, Cambridge



New art rotation graces the walls of Flour Bakery.

Fundraiser to Benefit Art in Giving and Rachel Molly Markoff Foundation

Please join us on October 12th at
the Glass House
to benefit
[Art in Giving and The Rachel Molly
Markoff Foundation.](#)

Event Details

Date: Thursday October 12, 2017

Location: [The Glass House](#), 450 Kendall
Street, Cambridge, MA

Time: 5:30pm to 7:30pm

Tickets: \$200

To purchase tickets or sponsor the event,
please contact

[Gary Markoff](#) or [Salvatore Zinno](#) or

call [\(617\)877-4230](tel:6178774230)

To schedule a presentation, purchase art, ask questions, or make a contribution, please contact
Eliane Markoff at <mailto:emarkoff@artingiving.org> or (617) 877-4230.